

## SurveyView Product Sheet

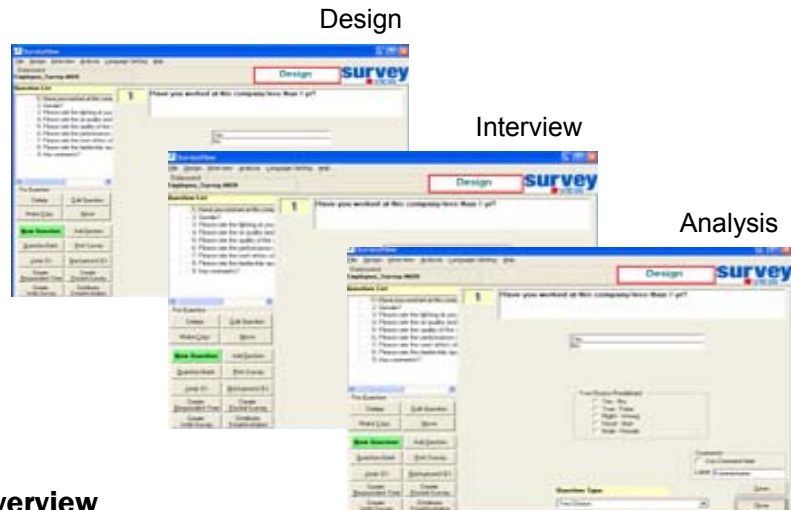


### Key Technical Facts

- Win 95/98/NT/2000/XP
- Interview respondents by Web, Pocket PC/Palm, or data entry (for telephone and paper based responses)
- Web Surveys are in .asp format and run on Microsoft Web Servers (IIS)
- Single-page or multi-page Web Surveys
- Ability to Start/Stop/Restart Web Survey
- Advanced population management
- Online Testing/Scoring module
- Advanced respondent email management
- Analysis and Reporting
- Raw Data Export (for analysis and reporting in for example Excel or SPSS)
- Data security (PIN numbers)
- Customize surveys with color schemes and logos
- Question branching logic

### Common Uses

- Customer Surveys
- Staff or Employee Surveys
- Online Testing/Screening
- Applicant Screening
- Membership Surveys
- Research Projects



### Overview

*SurveyView is a professional survey software solution designed for administering surveys and polls over the Web, by Pocket PC/Palm, or by data entry (for telephone and paper-based responses).*

*The central administration tool is the **SurveyView Admin** tool, that is installed on your PC. It is used for creating your questionnaires, entering data and analyzing results. This module can also automatically create your Web-survey pages and Pocket-survey pages for collecting data over the Web or by Pocket PC/Palm.*

*After collecting your data, you can analyze and report results using the SurveyView Admin tool or you can display real-time analysis data on a Web Page. You can also export data for further analysis in for example Excel or SPSS.*

### Versions

- ◆ **SurveyView Admin**—The central tool used for creating and administering surveys. Installed on your PC. Includes ability to create survey files for use on Pocket PC/Palm and by Web. **SurveyView Admin Lite** is a version restricted to 500 respondents per survey. **SurveyView Admin Express** is a restricted version that has no Web survey or Pocket/Palm functionality and no testing/scoring module, and is restricted to 500 respondents per survey.
- ◆ **Enterprise add-on** —Used for real-time data capture into database and real-time data analysis on the Web. The Enterprise add-on is installed on the Web Server.
- ◆ **Enterprise ODBC add-on**—For large-scale survey projects, migrate your data to a more robust database (SQL Server or Oracle). The Enterprise ODBC add-on is installed on the Web Server.
- ◆ **SurveyView Pocket add-on** —Collect data using a Pocket PC/Palm device.

**Research Systems, Inc.**  
625 W. Main Street  
Ville Platte, LA 70586  
U.S.A.  
Ph: 1-888-789-0429  
Fax: 1-800-720-1317  
usinfo@surveyview.com

**Research Systems AB**  
Stationsgatan 10  
541 31 Skövde  
SWEDEN  
Ph: +46-500-410705  
Fax: +46-500-428390  
info@surveyview.com

**For more information and free downloadable demos, go to [www.surveyview.com](http://www.surveyview.com)**